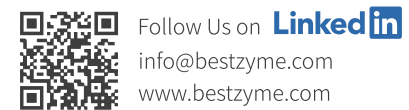




### Product Parameters

Main Ingredient	Protease 100000 U/g
Form	Powder
Application Method	It is recommended to add 150-300 g/t in the complete fee
Packing Specificayion	25 kg/bag
Storage and Shelf life	Store in a cool, dry, well ventilated place.12 months under the original packaging

**Add Value to Feed**



Follow Us on [LinkedIn](#)  
info@bestzyme.com  
www.bestzyme.com



**ProMax Protease**  
Comprehensively Improve the Value  
of Protein Raw Materials

[www.bestzyme.com](http://www.bestzyme.com)



ProMax is a new type of heat-resistant protease specially developed by Bestzyme for feed application. During the research and development of the product, the feed processing conditions, composition and structure of feed raw materials, animal physiology and other factors were comprehensively considered, and the thermal stability, acid resistance in vivo, suitable range of pH, action site, substrate adaptability and action efficiency of protease were focused on. All of these make the protease show excellent performance in feed processing and breeding applications.

### ■ Improve animal performance

Breeding experiments have proved that reducing the dietary protein level and adding ProMax has no adverse effects on the performance of livestock and poultry, so it can reduce the cost of feed formula and improve the economic benefits of farming.

### ■ Improve the utilization efficiency of protein raw materials

ProMax can degrade anti-nutritional factors such as trypsin inhibitor and soybean antigen protein, and reduce their adverse effects.

### ■ Reduce ammonia nitrogen emissions

ProMax is environmentally friendly, which can reduce the ammonianitrogen emission in livestock manure, improve the environment of livestock house and reduce the breeding pollution.

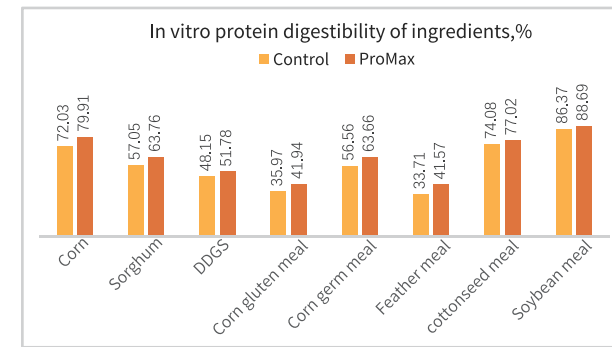
### ■ S2 protease molecule developed specifically for animal breeding

ProMax is developed based on the unique gene technology and strain expression platform developed by the Bestzyme R&D team.

The molecule is derived from the S2 family protease of thermophilic bacteria. Compared with the currently widely used alkaline protease in the S8 family, ProMax has higher heat resistance, better acid resistance, and wider cutting site preference at the molecular level.

### ■ Wide cutting site, widely applicable to various raw materials, and forms a good complementation with endogenous proteases

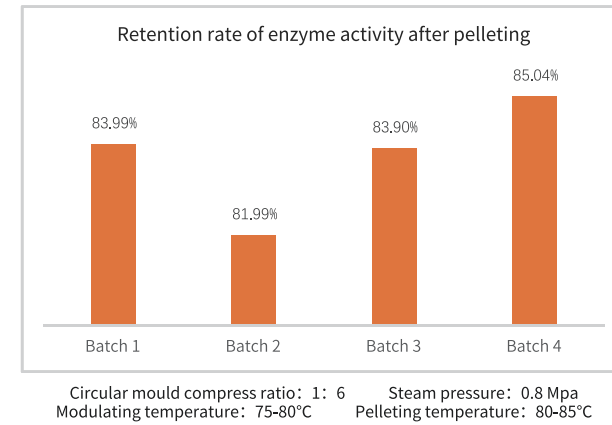
It has wide applicability to feed raw materials. Whether it is globulin and albumin which are easily decomposed in raw materials such as soybean meal, or gliadin and gluten which are difficult to decompose in raw materials such as corn and sorghum, ProMax can significantly improve the protein digestibility in raw materials.



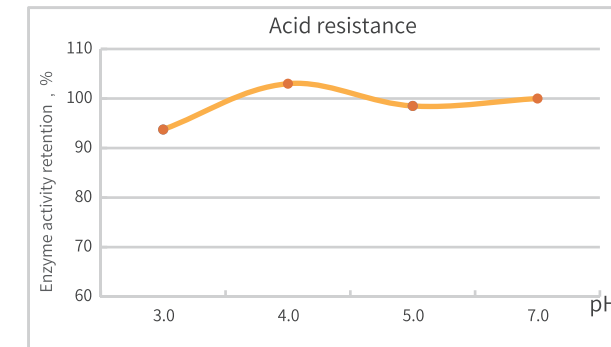
ProMax' s cutting sites include the peptide bond preferences of pepsin, chymotrypsin, elastase, ect., which can complement trypsin to form a good synergistic effect and effectively supplement the deficiencies of endogenous protease.

### ■ Super tolerance

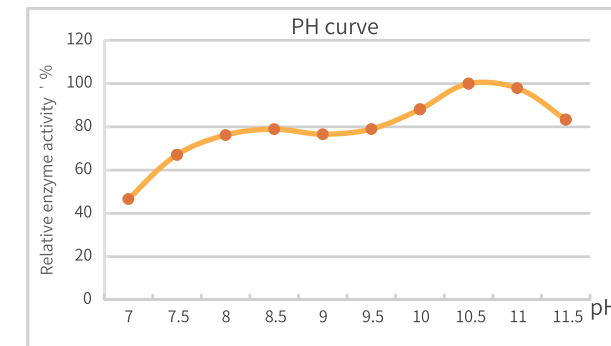
Its heat resistance is significantly higher than the common proteases in the market, and more than 80% enzyme activity can be maintained by conventional feed pelleting.



It has excellent acid resistance, passes through the stomach almost without damage, and can enter the intestines smoothly to exert its maximum effect.

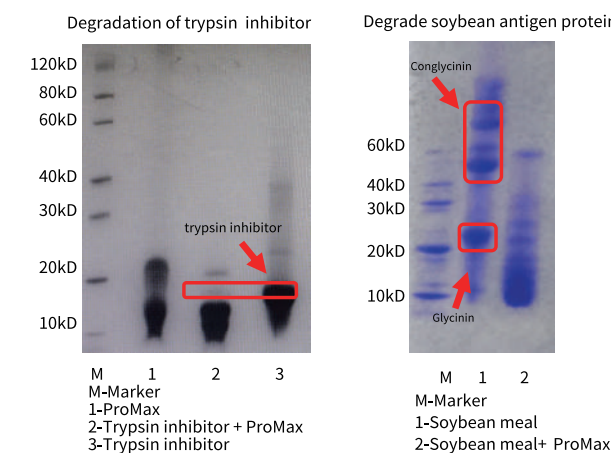


Wide range of pH applications, ProMax can maintain high activity between pH 7.5 - pH 11 and is more suitable for the intestinal environment of monogastric animals.



### ■ The degradation effect of trypsin inhibitor and antigenic protein is better

After co-incubation of soybean meal with ProMax in vitro, ProMax can eliminate most of trypsin inhibitors and antigenic proteins.



## The Application Effect of ProMax

### ■ Test 01 Effect of ProMax on the growth performance in broiler

Test site: Breeding test base in Binzhou city

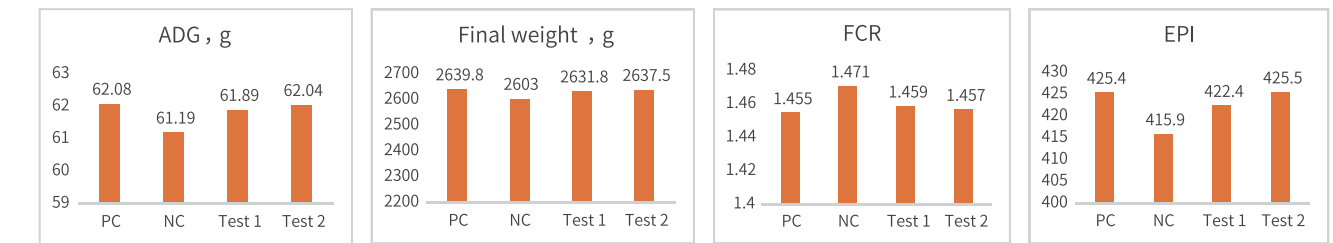
Test animal: 2496 1-day-old AA broilers were randomly divided into 4 groups, each with 8 replicates, and each replicate with 78 broilers.

Test period: 42 days

Test design:

Group	Diet
Positive control (PC)	Basal diet
Negative control (NC)	Basal diet -1%CP
Test 1	NC + Competitor
Test 2	NC + ProMax

Test result: Supplement of ProMax while reducing the protein level can improve the growth performance of broiler and reach the level of positive control. ProMax is more effective than competitor



### ■ Test 02 Effect of ProMax on the performance in laying hen

Test site: Breeding test base in Linyi city

Test animal: 15000 320-day-old Ly-line Brown laying hens were divided into 2 groups, each with 7500 birds.

Test design:

Control group: basal diet;

Test group: basal diet + ProMax

Test period: 30 days

Test result: Compared with the control group, laying rate increased by 2.44%, Feed/Egg decreased by 4.61% in the test group with the addition of ProMax. After accounting the economic benefits, gross profit of each bird was increased by 0.05 USD.

